

MOZILGE TOEIC

Volume

1

ECO nomy TOEIC

LORI

1000 Reading Comprehension
Practice Test Items
for the New TOEIC Test RC 1000



NHÀ XUẤT BẢN TỔNG HỢP
THÀNH PHỐ HỒ CHÍ MINH

NTV

Công ty TNHH
Nhân Trí Việt



Copyright © 2009-2013 Book21 Publishing Group

Published in Vietnam, 2014

This edition is published in Vietnam under a license Agreement between Book21 Publishing Group and Nhan Tri Viet Co., Ltd. through Imprima Korea Agency.

All rights reserved. No part of this publication may be reproduced, stored in a retrieval system, or transmitted, in any form or by any means, electronic, mechanical, photocopying, recording, or otherwise, without the prior written permission of the copyright owner.

Eco nomy RC1000

TOEIC

LORI



NHÀ XUẤT BẢN TỔNG HỢP
THÀNH PHỐ HỒ CHÍ MINH

NTV

Công ty TNHH
Nhân Trí Việt



CONTENTS

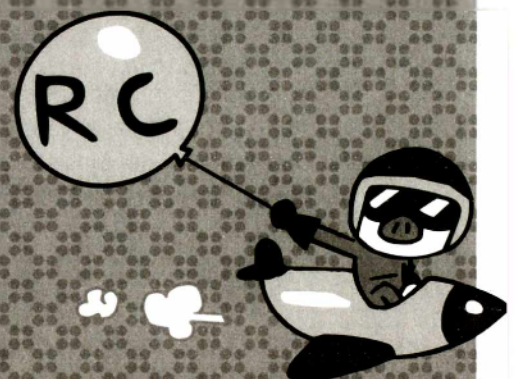
E·c·o·n·o·m·y R·C·1000



Actual Test 01	8
Actual Test 02	34
Actual Test 03	60
Actual Test 04	86
Actual Test 05	114
Actual Test 06	142
Actual Test 07	168
Actual Test 08	194
Actual Test 09	220
Actual Test 10	248
Answers	277

Economy
RC 1000

Actual Test





READING

In the Reading test, you will read a variety of texts and answer several different types of reading comprehension questions. The entire Reading test will last 75 minutes. There are three parts, and directions are given for each part. You are encouraged to answer as many questions as possible within the time allowed.

You must mark your answers on the separate answer sheet. Do not write your answers in the test book.

Part 5

Directions: A word or phrase is missing in each of the sentences below. Four answer choices are given below each sentence. Select the best answer to complete the sentence. Then mark the letter (A), (B), (C), or (D) on your answer sheet.

101. ----- for the money management seminar will be forwarded to all the managers tomorrow.
(A) Invite
(B) Invitations
(C) Inviting
(D) Invitation
102. The employee-of-the-year prizes will be awarded to employees who demonstrated ----- contribution to the company's overall sales.
(A) whole
(B) inclusive
(C) exceptional
(D) multiple
103. Those who have questions concerning fringe benefits are advised to consult ----- employee handbook.
(A) their
(B) they
(C) themselves
(D) theirs
104. The summary contains not only a technical ----- but also solutions to adverse effects of urban renewal developments.
(A) description
(B) attention
(C) information
(D) mistake
105. The conference's keynote speaker addressed ----- impacts of digital technology on the current music industry.
(A) variety
(B) variably
(C) variation
(D) various
106. Documents with a secret nature are ----- retained in each director's safety deposit box.
(A) relatively
(B) slightly
(C) usually
(D) vaguely
107. The fitness club ----- a steadily increasing number of customers and is eager to develop new programs.
(A) see
(B) seen
(C) seeing
(D) has seen
108. The job fair held in the City Center last week is considered the most ----- one so far, with over 3,000 people in attendance.
(A) overall
(B) successful
(C) wealthy
(D) delighted

- 109.** The effects of affordable housing ----- in rural areas will be discussed at the conference.
 (A) develops
 (B) developing
 (C) development
 (D) developed
- 110.** Because the annual budget report must be submitted ----- the end of the month, employees are busy calculating figures.
 (A) on
 (B) between
 (C) by
 (D) except
- 111.** Even though assigned tasks are somewhat complex, we will have to complete them before we ----- for the day.
 (A) leave
 (B) leaving
 (C) to leave
 (D) have left
- 112.** All workers are required to use the sheet provided to ----- their working hours and have their manager sign the form to verify the hours at the end of each day.
 (A) practice
 (B) rewind
 (C) record
 (D) attend
- 113.** Even if residents in the area have shown strong ----- to the project, the city government may not be hesitant to proceed with it.
 (A) resisting
 (B) resistant
 (C) resisted
 (D) resistance
- 114.** The team members have the same opinions on the matter ----- they shared the same information.
 (A) following
 (B) more than
 (C) because
 (D) unless
- 115.** The two divisions have unveiled ----- plan to set aside millions of dollars to invest in a very lucrative field.
 (A) they
 (B) them
 (C) their
 (D) those
- 116.** ----- proficiency in German would be of much help, it is not a requirement for the advertised position.
 (A) Otherwise
 (B) Despite
 (C) Regarding
 (D) Although
- 117.** We had to spend the whole month searching for better solutions, and ----- customers were impressed by our efforts.
 (A) fortunate
 (B) fortunes
 (C) fortune
 (D) fortunately
- 118.** The purchasing department ----- the drastic changes to the purchasing practice with outside suppliers.
 (A) involved
 (B) agreed
 (C) announced
 (D) maintained
- 119.** ----- anyone wish to access the information on the status of his or her order, the password should be entered.
 (A) If
 (B) Should
 (C) Whether
 (D) As though
- 120.** The ----- of the internship program are to help job seekers strengthen their professional skills and make them suitable for careers they are looking for.
 (A) destinations
 (B) treatments
 (C) goals
 (D) opinions

GO ON TO THE NEXT PAGE



121. The more we spent with the sales team, the more ----- we were with their innovative marketing skills.
(A) impression
(B) impress
(C) impresses
(D) impressed
122. ----- none of the participants has showed any interest, numerous outdoor activities have to be cancelled.
(A) Whether
(B) Since
(C) For
(D) Which
123. Customers ----- wish to return merchandise within 7 days of purchase must present the valid receipt to the store.
(A) who
(B) when
(C) what
(D) whom
124. All laboratory employees make it a point to take every ----- to avoid potential hazards.
(A) precaution
(B) advice
(C) rule
(D) idea
125. The manager said that it is ----- to test emergency equipment frequently to avoid any malfunction.
(A) appropriate
(B) appropriateness
(C) appropriately
(D) most appropriately
126. It is necessary to ----- a thorough survey in order for us to obtain highly desirable sites for our new headquarters.
(A) detain
(B) associate
(C) conduct
(D) foresee
127. Ms. Walters was ----- to make a presentation on how to increase revenue when I entered the room.
(A) nearly
(B) off
(C) close
(D) about
128. Mr. Lee takes care of several ----- tasks, such as sorting papers and filing documents in the cabinet.
(A) favorable
(B) routine
(C) sincere
(D) recent
129. ----- her hard work and commitment to the company, Ms. Ramirez was promoted to the head of the public relations department.
(A) Due to
(B) While
(C) In that
(D) In case
130. The unexpected operating complexity was more serious than ----- anticipated.
(A) origin
(B) original
(C) originally
(D) originated
131. Due to ----- fuel prices, the company has decided to add a surcharge to all deliveries.
(A) rise
(B) arisen
(C) rose
(D) rising
132. As the company's strongest competitor released a new line of fall clothing, NTR Inc. moved ----- to introduce its new leather jackets.
(A) regularly
(B) quickly
(C) softly
(D) tiredly